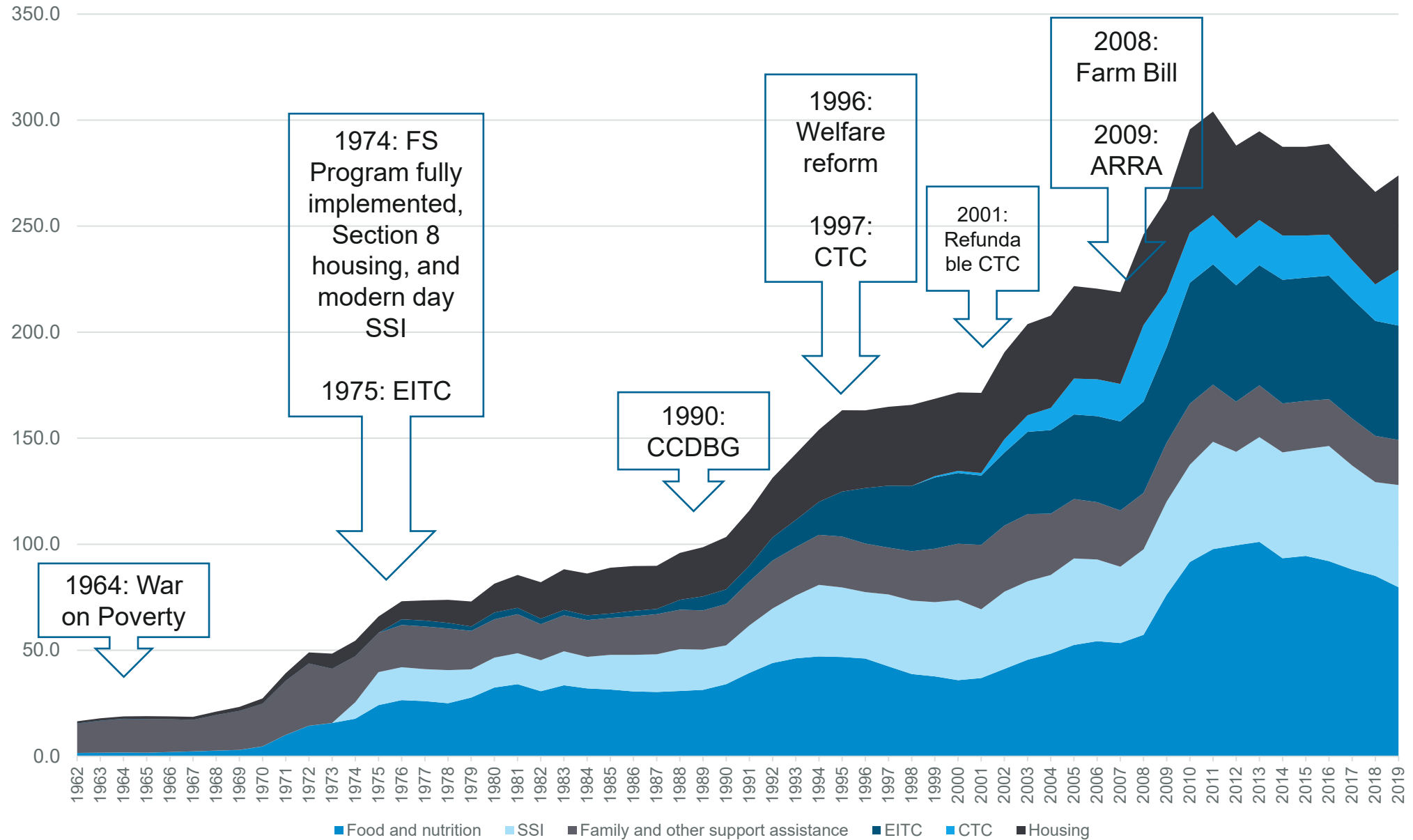
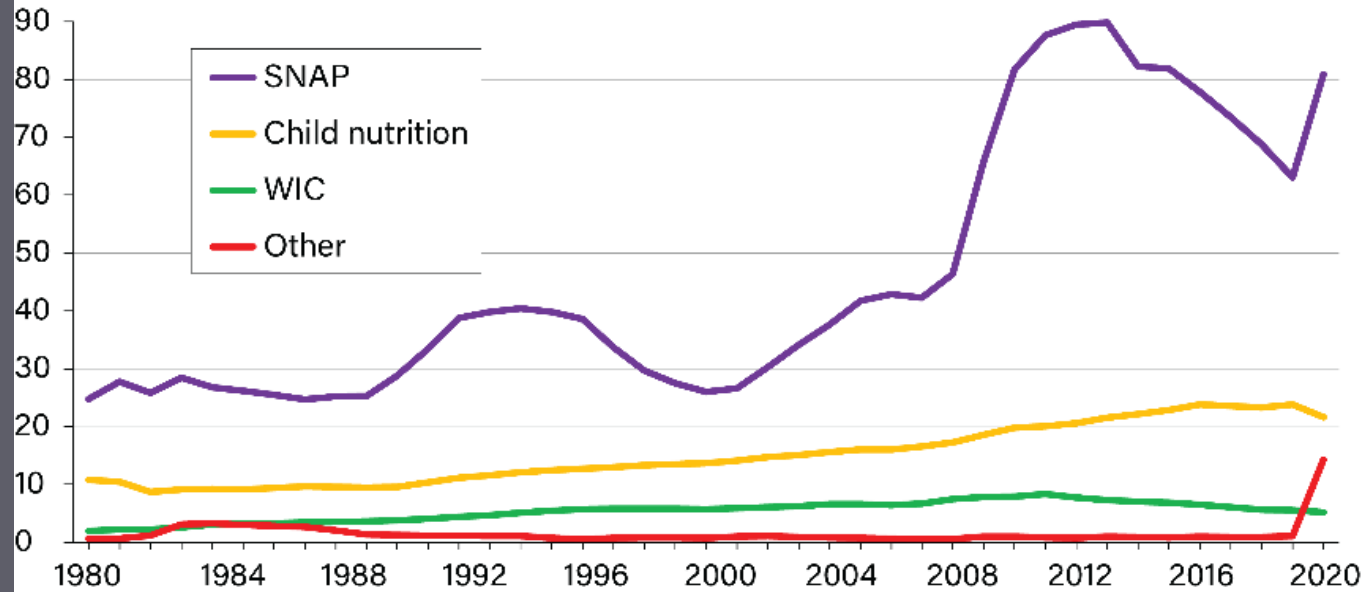


# FEDERAL OUTLAYS IN CONSTANT (FY 2012) DOLLARS: 1962 - 2019



## Inflation-adjusted USDA expenditures on food assistance programs, fiscal years 1980-2020

2020 dollars (billions)



Notes: Expenditures are adjusted for inflation (and are presented in 2020 dollar values) using the Personal Consumption Expenditures price index from the U.S. Department of Commerce, Bureau of Economic Analysis. SNAP includes Supplemental Nutrition Assistance Program (SNAP, formerly the Food Stamp Program) and the Nutrition Assistance Programs in Puerto Rico, the Northern Marianas, and starting in FY 1996, American Samoa. Child nutrition includes the National School Lunch, School Breakfast, Child and Adult Care Food, Summer Food Service, and Special Milk Programs.

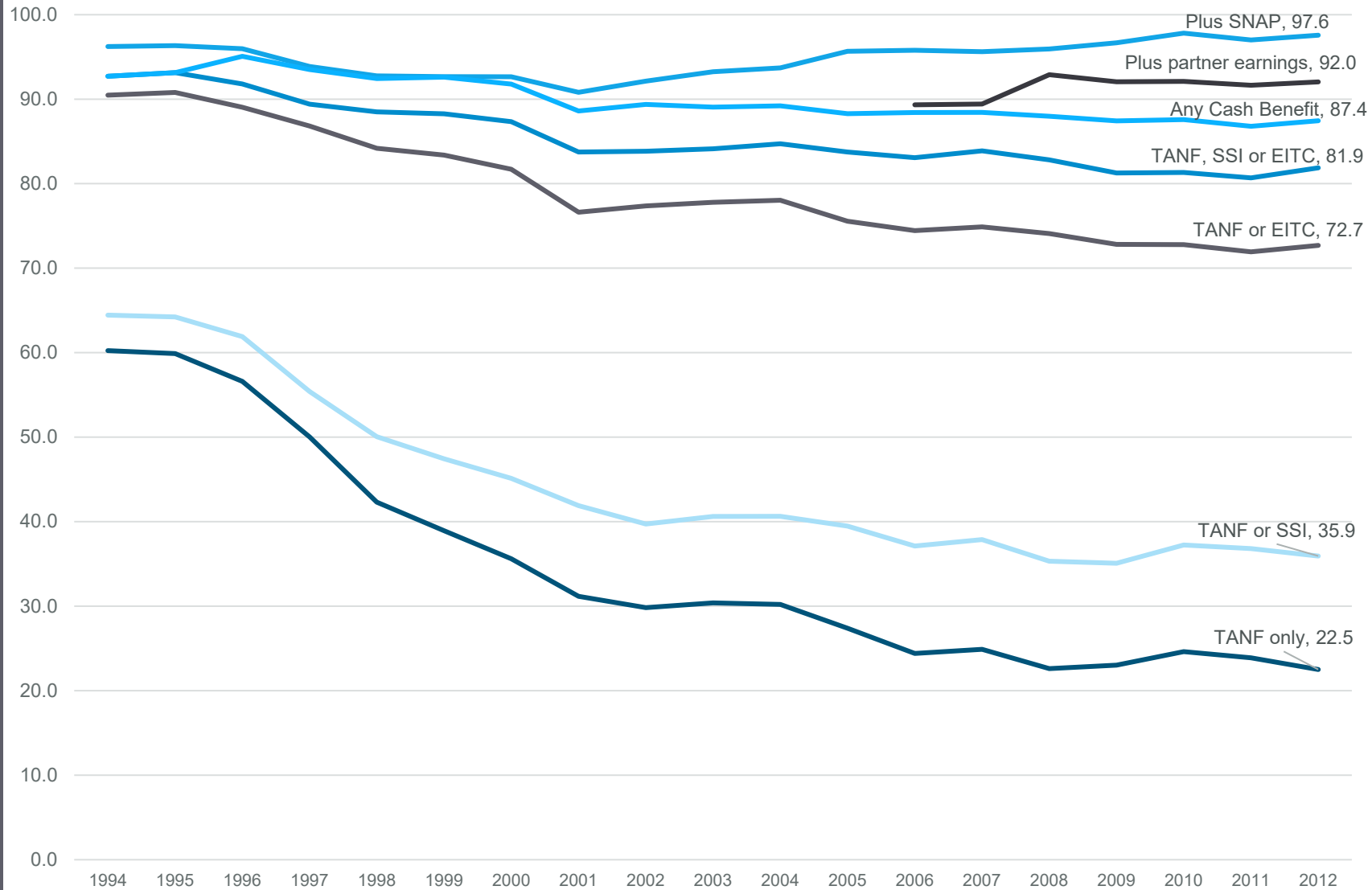
WIC includes the Special Supplemental Nutrition Program for Women, Infants, and Children (WIC) and the Commodity Supplemental Food Program.

Other includes Pandemic Electronic Benefit Transfer (P-EBT), the Farmers to Families Food Box Program, the Food Distribution Program on Indian Reservations, the Nutrition Services Incentive Program, Disaster Feeding, The Emergency Food Assistance Program, the Food Distribution Programs for Charitable Institutions and Summer Camps, and administrative expenses not elsewhere classified.

Data are subject to revision.

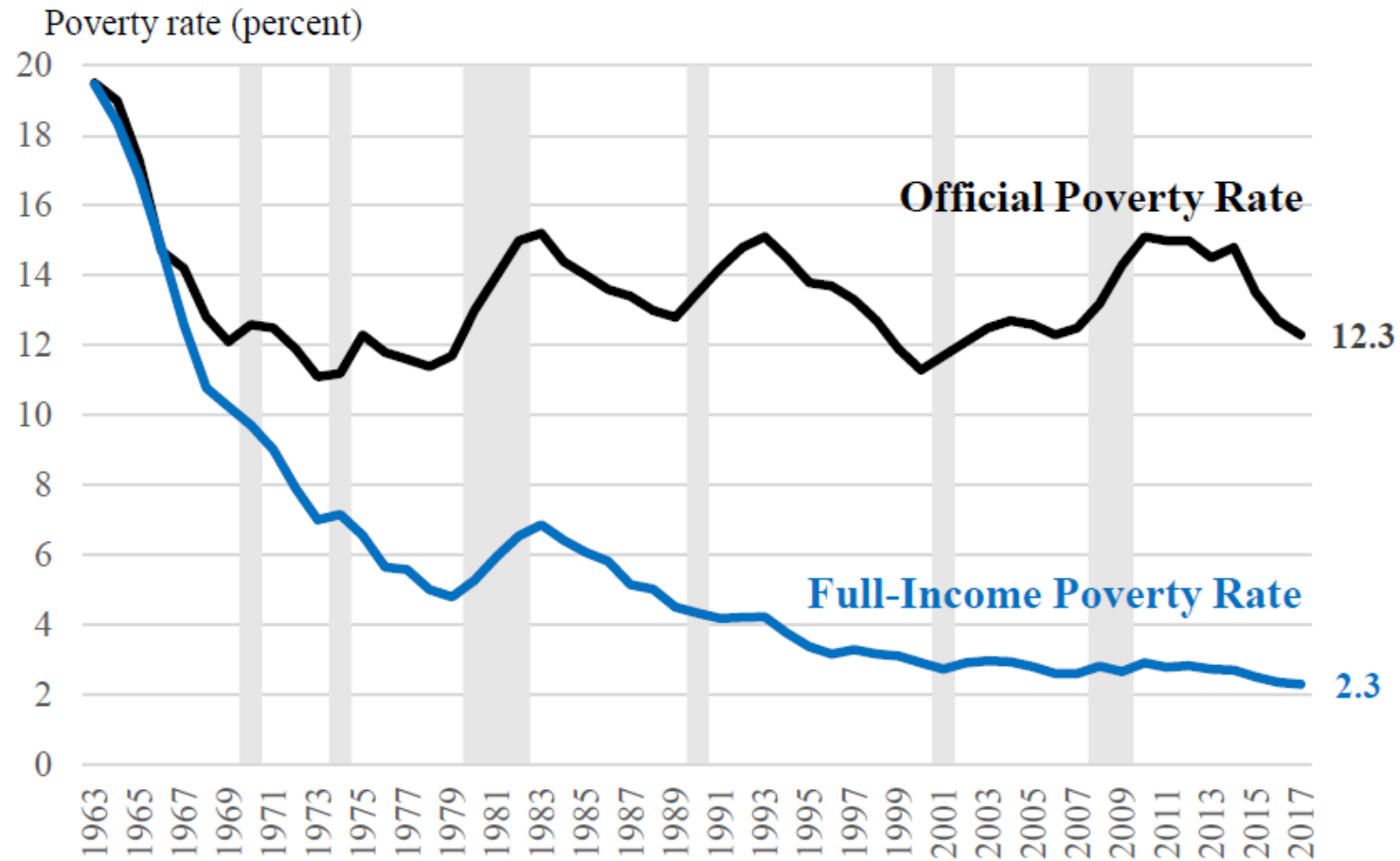
Sources: Prepared by USDA, Economic Research Service, using data from USDA, Food and Nutrition Service, USDA, Agricultural Marketing Service, and U.S. Department of Commerce, Bureau of Economic Analysis. Data as of January 2021.

### Number of Poor Families with Children that Receive Benefit for Every 100 Families



Source: Rachidi & Jin, Reach of the Cash-based Safety Net.

**Figure 2. Official Poverty Rate and Full-Income Poverty Rate, 1963 to 2017**



Source: IPUMS and NBER CPS data; Advisory Commission on Intergovernmental Relations (1968); BEA; BLS; Census Bureau; CMS; Collinson et al. (2016); Flood et al. (2018); Hoynes et al. (2016); Kramer (1988); MACPAC; NBER TaxSim; NHEA; OMB; USDA; Authors' calculations.

Note: Shading denotes NBER-based recession periods.